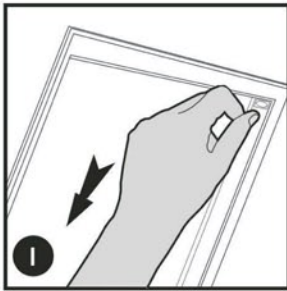
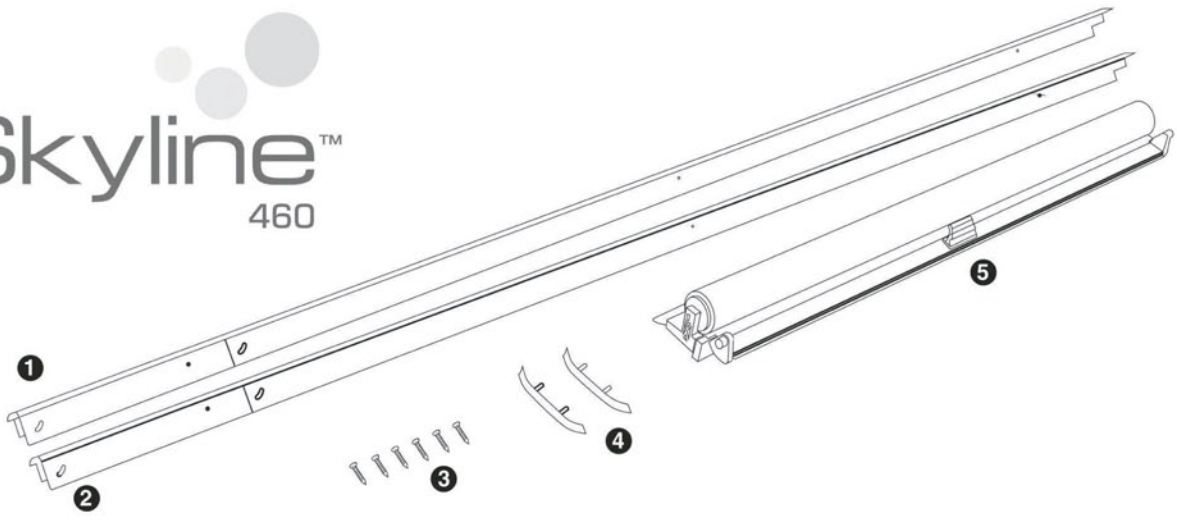
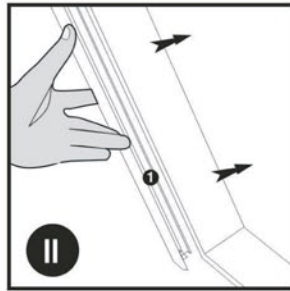


Skyline™

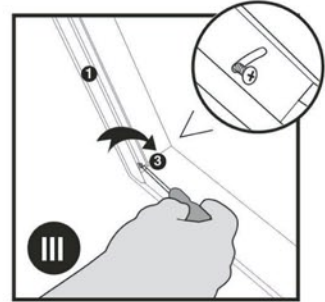
460



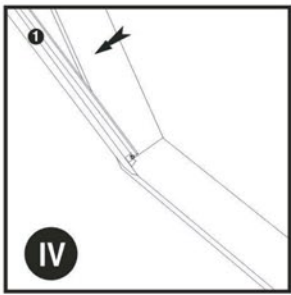
I
Remove any existing brackets



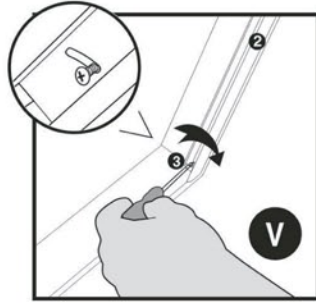
II
Fix L/H hand side channel for window frame



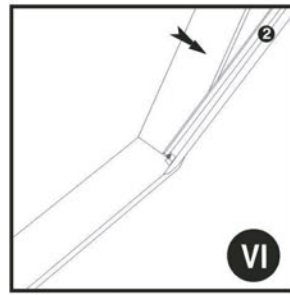
III
Using screw fix L/H side channel at bottom slot



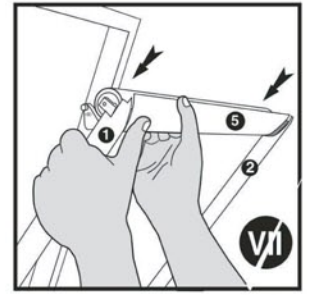
IV
Gently pull L/H side channel away from top of window



V
Fix R/H side channel to window & attach at bottom



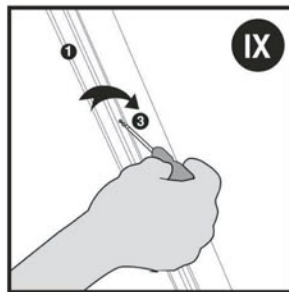
VI
Gently pull R/H side channel away from top of window



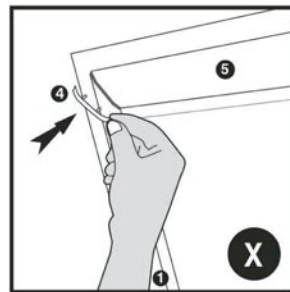
VII
Attach roller to top of side channels



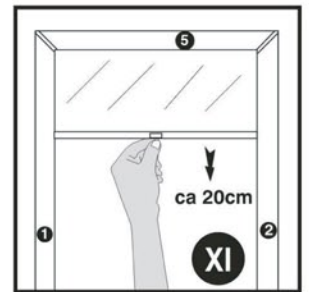
VIII
Push blind into window frame



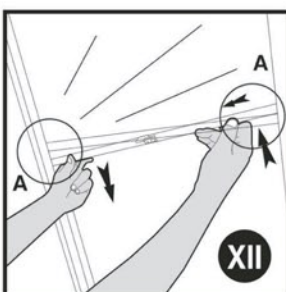
IX
Attach blind using remaining screws



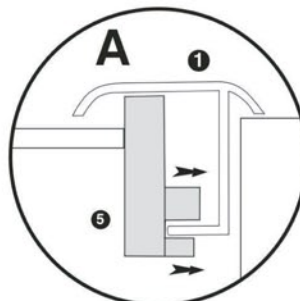
X
Clip on plastic mitre caps



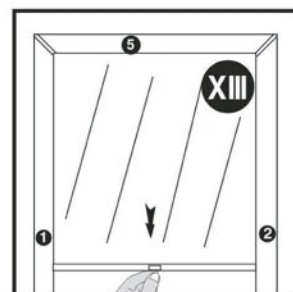
XI
Pull blind down by 20cm



XII
Check bottom bar is not twisting



XIII
To stop twisting adjust bottom bar end caps to remove slack



XIV
Blind should now pull up & down easily with no twisting